

WEBINAR



Inclusive Alliance COMMUNITY CARE HUB

Explore how we're enhancing CBO capacity, fostering collaboration, and expanding access to essential services.



WEDNESDAY
15 MAY



TIME
12 PM - 1 PM

This webinar is open to all health and social care organizations, including Community-Based Organizations with non-insurance billable programs, healthcare providers, hospitals, behavioral health professionals, and health insurance companies interested in learning about Inclusive Alliance's Community Care Hub.

inclusivealliance.org

Logistics & Learning Objectives

- Logistics:
 - Please send your questions in by using the Q&A box in Zoom
 - Slides & recording will be shared with registrants by Friday
- Learning Objectives:
 - What a Community Care Hub is and how it benefits the health of individuals most at risk in our communities
 - Common challenges faced by health & social care providers not part of a Community Care Hub
 - Planned initial programs of Inclusive Alliance's CCH
 - How your organization can benefit from participating in the Community Care Hub



ABOUT US

Our Mission

To advance the growth and quality of cost effective and inclusive individual services for children and adults through innovation, collaboration and coordination.

Our Funders



Our Purpose

Prepare members for managed care and the transition to value-based payment (VBP)

Independent Practice Association (IPA)
of community-based organizations of
varying sizes and scopes of services.

2016
Year
Founded

501c3
Nonprofit

7
Counties

40
Members
(& Growing!)

Meet Our Inclusive Alliance Members – Feb. 2024



Meet Our Board



Inclusive Alliance



Tania Anderson
ARISE



Stefanie Savory,
AccessCNY



Paulette Purdy
LAUNCH



Elizabeth Crockett
REACH CNY



Diane Cooper-Currier
Oswego County
Opportunities



Steven Bulger, ICAN



Brian Fay
Syracuse Northeast
Community Center



Mason Kaufman
Meals on Wheels
of Syracuse



Joan Royle
Westcott
Community Center



Shari Weiss
Cayuga Community
Health Network



Kristian Peterson, Catholic
Charities of Onondaga County



Lisa Alford
ACR Health

Central New York's Guide To New York Health Equity Reform (NYHER)

Lead
Partners:



Visit our
**1115 Waiver
Resource Center**



inclusivealliance.org/1115

- Information about the waiver amendment request
- Recordings of our 1115 waiver monthly webinar series
- Link to sign up for our waiver resource newsletter
- Additional waiver-related resources based on community interest
- 1115 Medicaid waiver acronym & definitions list

Supporting Partner:



A nonprofit independent licensee of the Blue Cross Blue Shield Association



1115 Waiver Update

What is Going on?

- Awaiting Social Care Network (SCN) award announcement by DOH (initially 6/1; projecting late June/early July)
- Awaiting Health Equity Regional Organization (HERO) selection by DOH (slated to begin work in June; may not be competitively procured)
- Awaiting Workforce Investment Organization (WIO) selection to provide Career Pathways Training Program by DOH (slated to begin work in Aug.; may not be competitively procured)
- DOH Waiver Presentation ([link](#))

How to Get Involved

- Community Advisory Committee & Workgroups
 - Time commitment – est. 1-2 hrs. per month in meetings, 2-4 hrs. per month of work outside of meetings
 - Expectations – represent perspective of sector/community, seeking input from others you represent, flag issues, help identify others who need to be engaged
 - Seeking diversity/representation by race, ethnicity, nationality, geography, etc.
 - Interest Form: https://share.hsforms.com/13Vr8KTilRGi2_xf9sR_8Uwcggh8

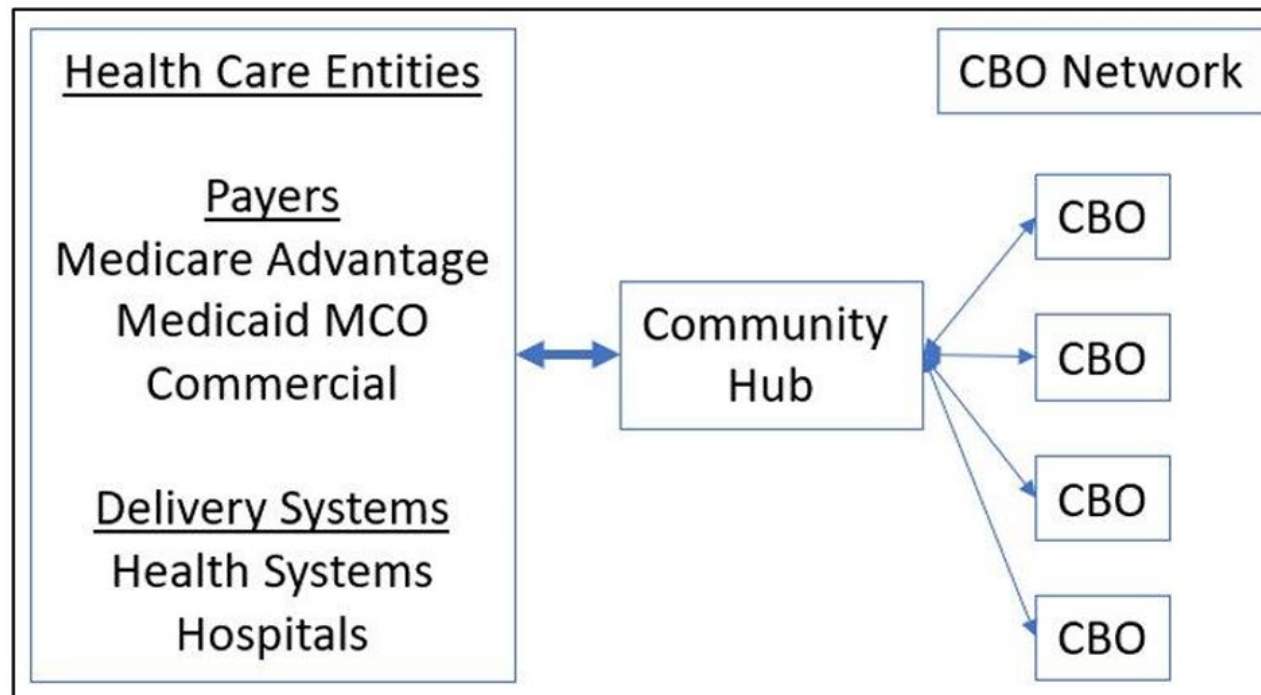


What is a Community Care Hub?

Enhancing CBO capacity, fostering collaboration,
and expanding access to social care

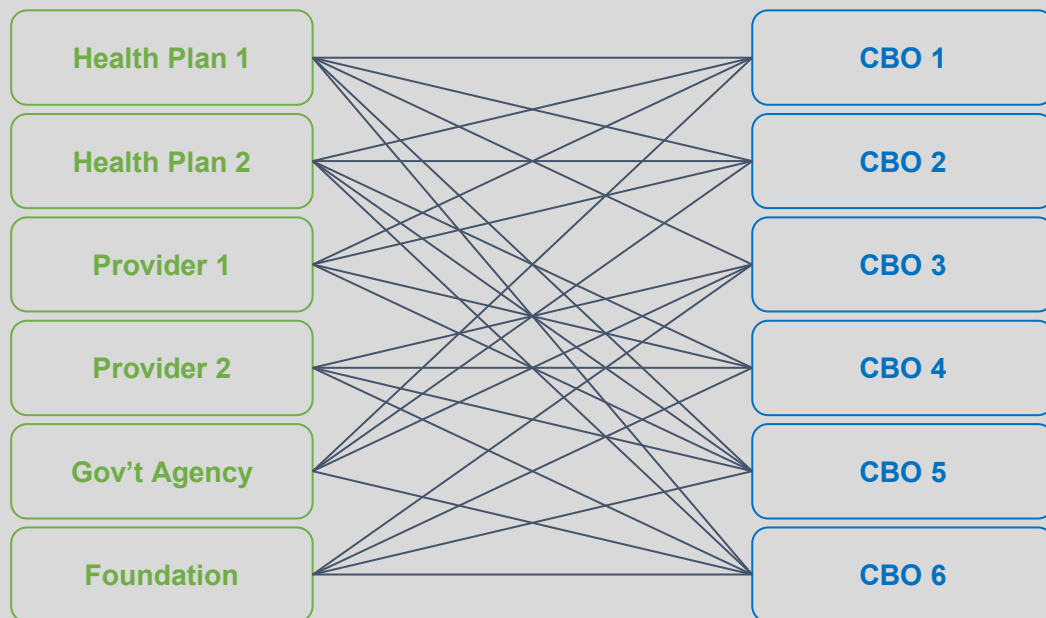
What is a Community Care Hub?

- Hubs are nonprofit organizations that provide a centralized administrative and operational interface between health care institutions and a network of CBOs that provide social services.

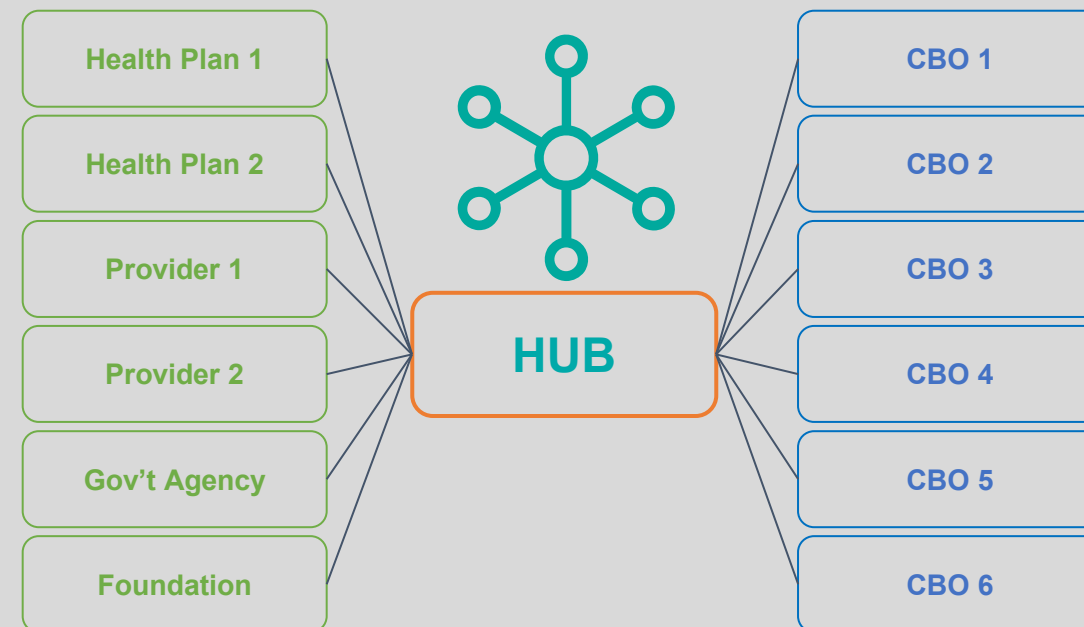


Why Do We Need a Community Care Hub?

Current State



Community Care Hub



Functions of a Community Care Hub

- Community-focused entity that organizes and supports a network of community-based organizations providing services to address health-related social needs
- Plays a role in promoting an equitable health and social care ecosystem and achieves its goals through coordination and provision of services that address health-related social needs
- Centralizes administrative functions & operational infrastructure including but not limited to:
 - Offer a single point of contracting for CBOs of all sizes with health care entities
 - Payment operations
 - Management of referrals
 - Service delivery fidelity (quality) and compliance
 - Technology, information security
 - Data collection and reporting

Functions of a Community Care Hub, cont.

- Coordinates funding from multiple private and public sources to develop hub infrastructure.
- Leverages trusted relationships and members' existing assets including workforce, service delivery expertise, and cultural competency to coordinate care in collaboration with health care partners.
- Enables CBOs and the communities they serve to have a seat at the table with health care providers in communities where under resourced CBOs may not otherwise be included in decision making.
- Coordinates community-based workforce development and training.
- Serves as bridge between community-based organizations, health care payers and providers, & public health systems to increase community's capacity to reach underserved populations

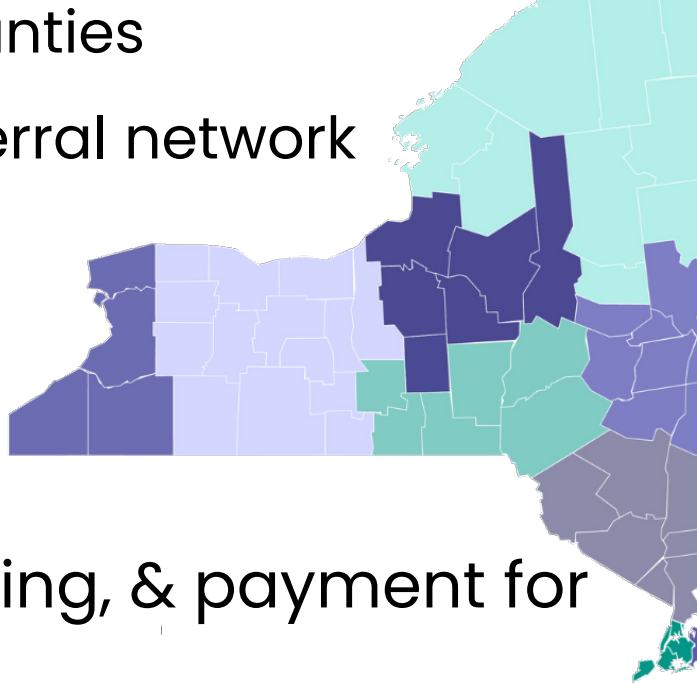
Our Vision

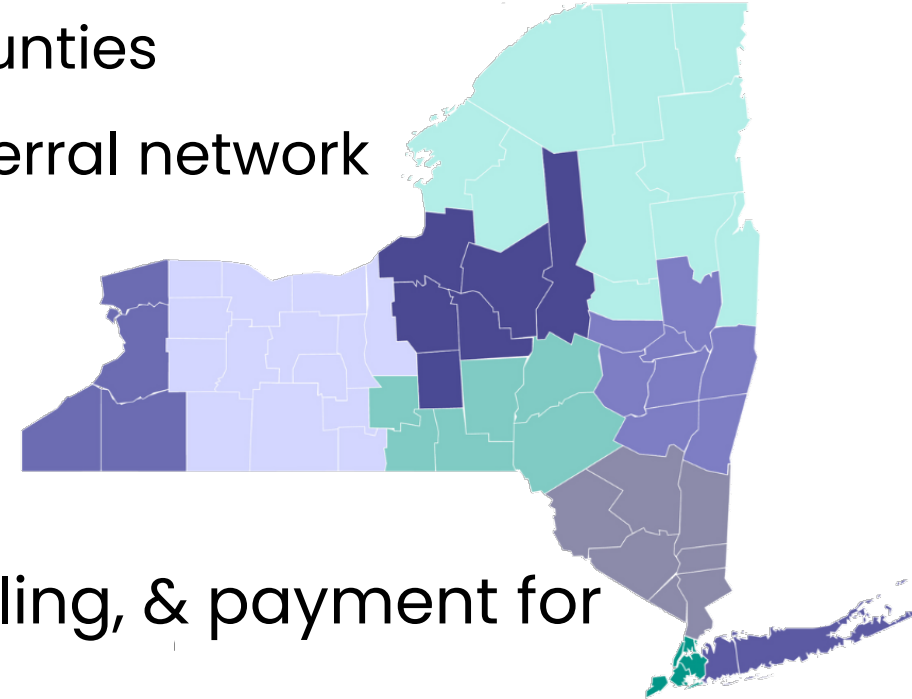
- Region: Cayuga, Cortland, Herkimer, Madison, Oneida, Onondaga, & Oswego counties
- Payors: Medicaid & Medicare (fee for service & managed care), government contracts, VBP subcontracts, grants, member dues, & (eventually) commercial & self-insured plans
- Evidence-based, billable interventions delivered by our members such as:
 - Pathways Community HUB care coordination
 - Diabetes Prevention Program (DPP)
 - Chronic Disease Self-Management Program (CDSMP)
 - Meal Delivery Program
 - Healthy IDEAS/PEARLS Program
 - Diabetes Self-Management Education and Support (DSMES)
 - Medical Nutrition Therapy
 - Falls Prevention Program
 - Caregiver Support Program
 - In lieu of services (ILOS)

Our Vision, cont.

- Advance healthy equity through focus on CBOs that serve population groups that experience health disparities:
 - People with disabilities
 - Low-income communities of color
 - Low-income rural communities
 - Low-income seniors
 - Low-income families of young children
- Elevate CBO capacity by freeing up time & money through administrative & operational efficiencies:
 - Shared services (e.g., HR person shared by IPA & 4 member organizations)
 - Group purchasing (e.g., IPA negotiates group contract for supplies)
 - Centralized services (e.g., IPA billing infrastructure)
 - Collective tools & resources for CBOs to operate more efficiently (e.g., referral platform)

Inclusive Alliance's Qualifications to lead a Community Care Hub

- Non-profit IPA network with CBO members in 7 counties
 - 2.5 years' experience co-managing a regional referral network
 - Novel social care data warehouse & experience assessing CBO data capacity & IT security
 - Local CBO-lead, representative, democratic governance structure
 - Central administrative hub for contracting, billing, & payment for National Diabetes Prevention Program (NDPP)
 - Selected as one of 30 entities nation-wide to participate in the 2023-2024 Community Care Hub National Learning Community
 - Multi-year grant from HFWCNY to develop our CCH (thank you!)
- 



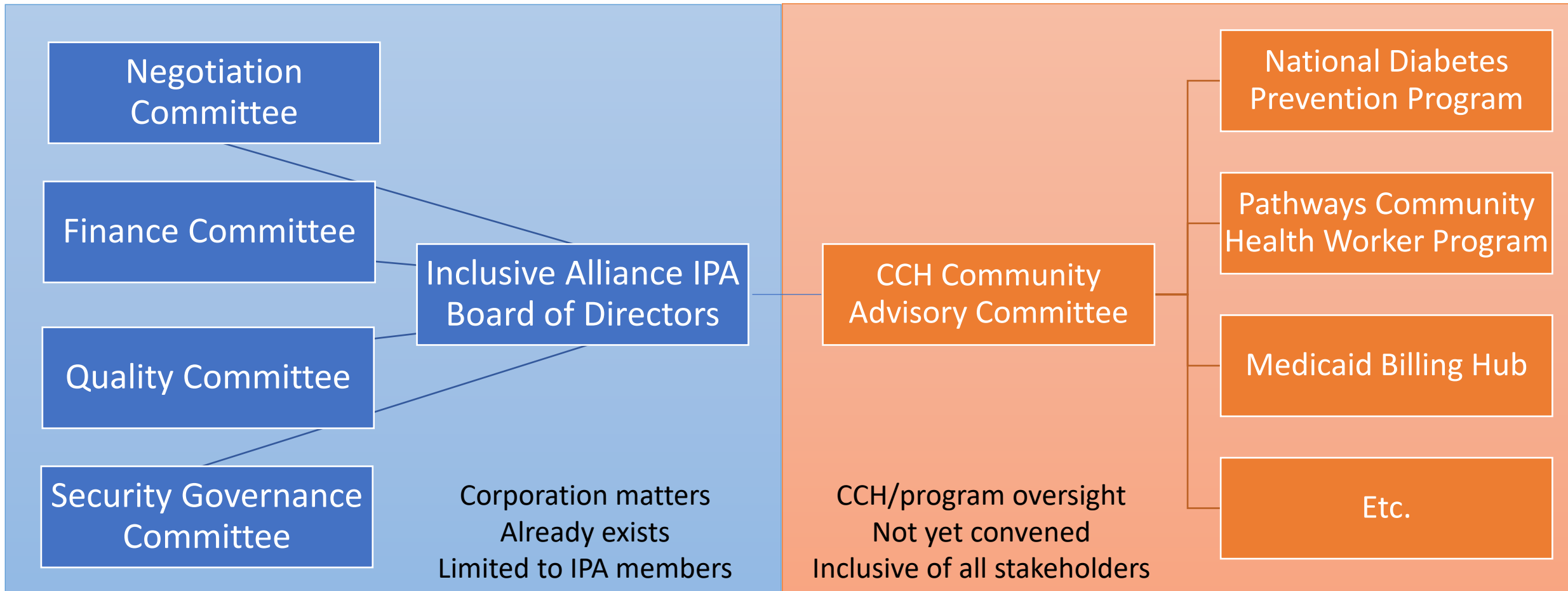
Planned Initial Programs of the CNY CCH

- National Diabetes Prevention Program
- Pathways Community HUB – Community Health Worker Program
- Medicaid/Medicare Billing HUB
 - For newly billable social care services, e.g., Community Health Worker services
 - For CBOs/providers new to billing, e.g., doulas

Inclusive Alliance's Approach to Preparing for the SCN RFP



CNY Community Care Hub



How does the CCH differ from the 1115 SCN?

Community Care Hub

- Supported by contracts with payors (e.g., health plans, foundations, gov't agencies)
- Not restricted to specific source of insurance
- Negotiated contracts define services, eligibility, & rates

Social Care Network

- Supported by 1115 waiver funds
- Eligibility restricted to people with Medicaid
- NYSDOH selected the intervention/services & defined who can receive them
- Rate schedule set by NYSDOH

Coming Attractions – Upcoming Webinars

Subject to change:

- **June 19, 12-1:** Webinar CANCELLED (Happy Juneteenth!)
- **July 17, 12-1:** Tentative: 1115 SCN Award/Next Steps
- **August 21, 12-1:** TBD

Stay Involved & Get in Touch!

Tania Anderson, President & Board Chair

∞ Tania.Anderson@ariseinc.org

∞ 315-671-5111

Nicole Hall, Network Development Manager

∞ Nicole.Hall@inclusivealliance.org

∞ 315-971-0398

Salina Fasulo, Administrative Coordinator

∞ Salina.Fasulo@inclusivealliance.org

∞ 315-887-8233

Lauren Wetterhahn, Executive Director

∞ Lauren.Wetterhahn@inclusivealliance.org

∞ 315-899-1043



∞ [Sign up](#) for our Network Scoop newsletter

∞ Visit our website: inclusivealliance.org